

# CERTIFICATE OF LOCATION OF GOVERNMENT CORNER

County of Anoka

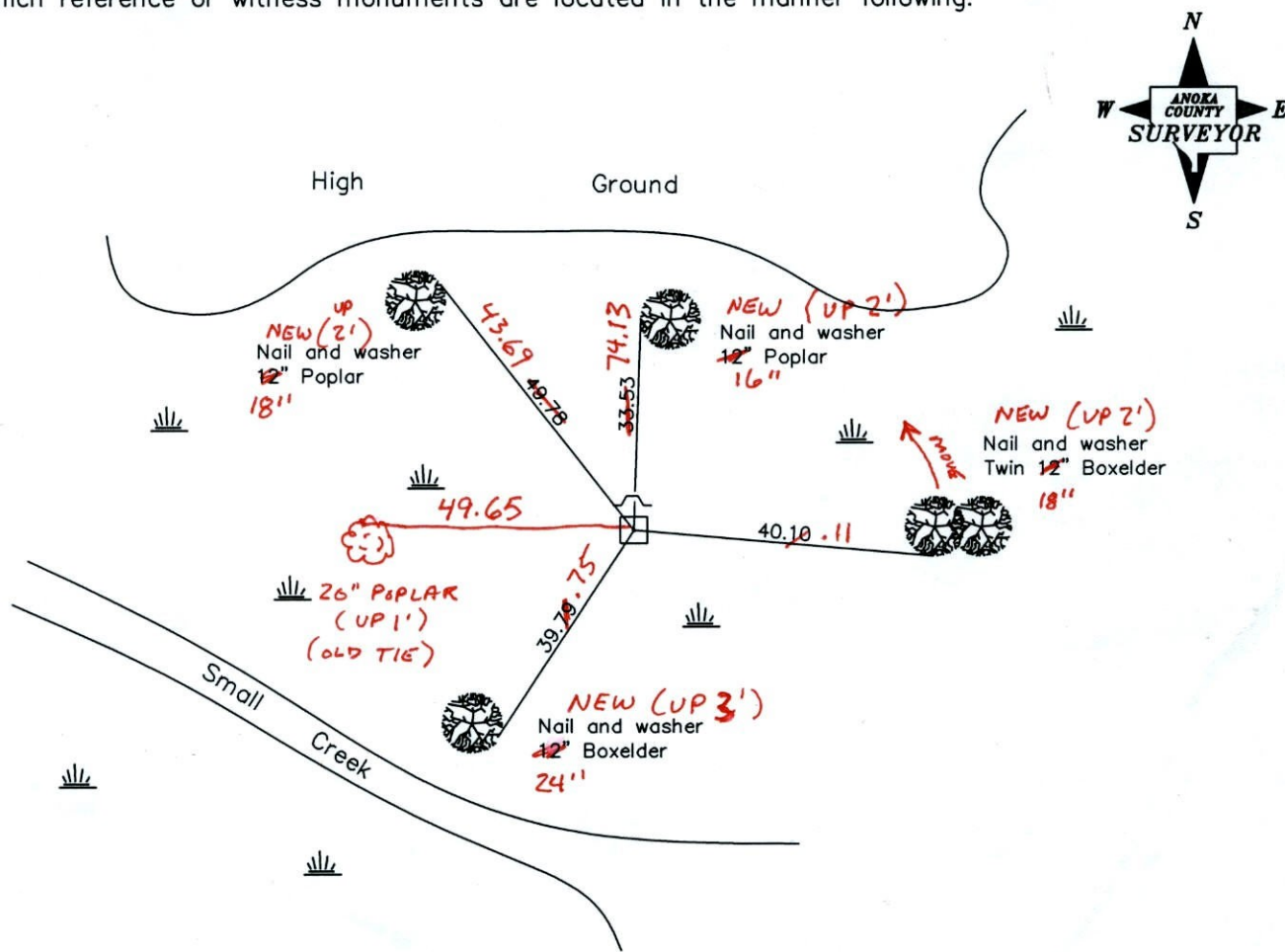
State of Minnesota

East 1/4 Corner of Sec. 24 Township 32 Range 23

I hereby certify that on the 3rd day of May, 1965, I found the described corner which was evidenced by a concrete monument

and I further certify that to perpetuate the location of said corner, I did, at the exact location thereof, place a permanent marker consisting of a concrete monument (top broken) with sign and post on the north side  
(METAL SPIKE IN TOP CENTER)

which reference or witness monuments are located in the manner following:



**SS - BONG**  
**TAPED**  
 Revised date

3/17/94
3/05/02
4-22-11

N.A.D. 1983 Coordinates  
 (1996 adjustment)

County Project Coordinates	State Plane Coordinates
Northing <u>177270.4909</u>	Y _____
Easting <u>532027.6748</u>	X _____

Date 3/05/02



# CERTIFICATE OF LOCATION OF GOVERNMENT CORNER

County of Anoka

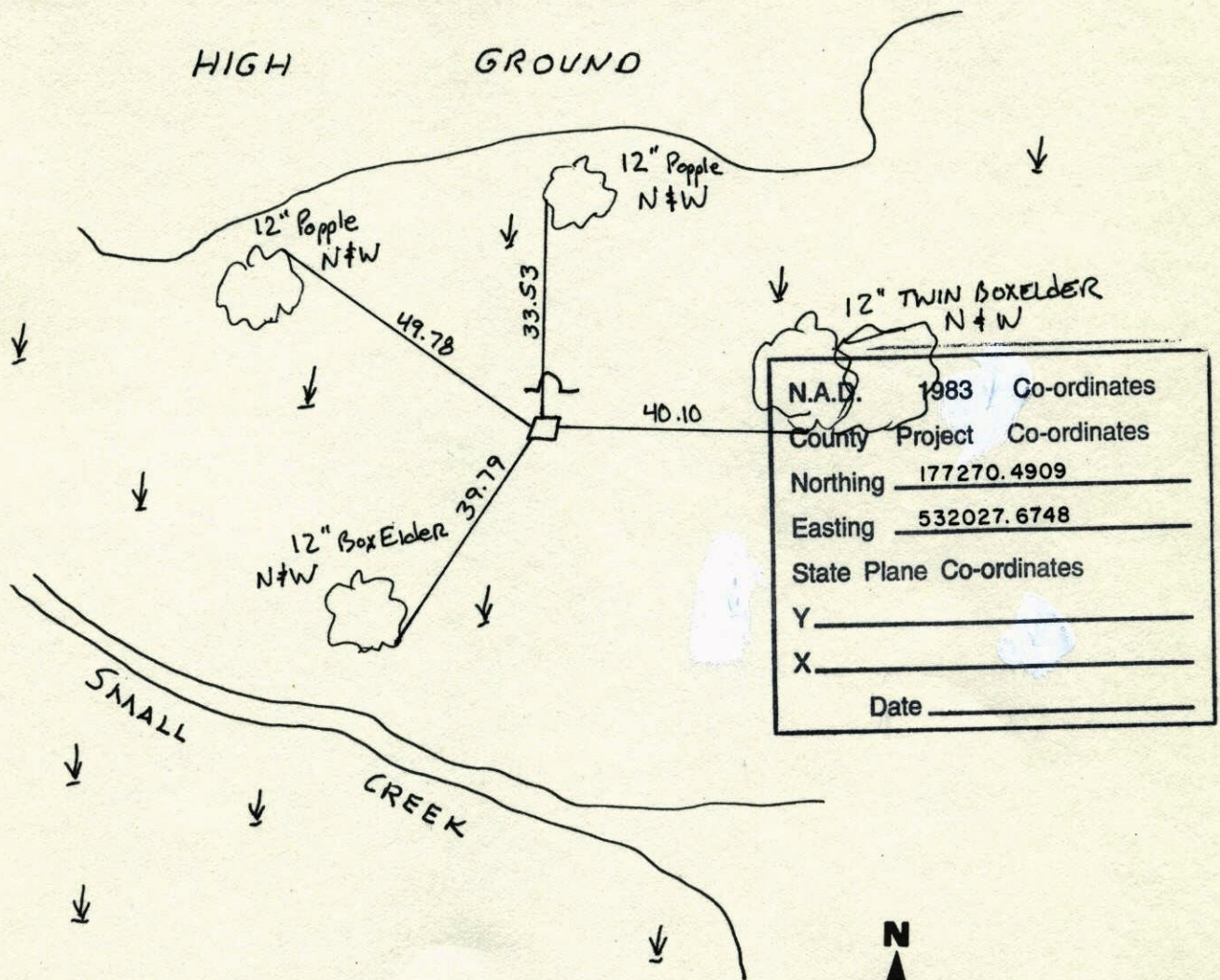
State of Minnesota

EAST 1/4 Corner of Sec. 24 Township 32 Range 23

I hereby certify that on the 3<sup>RD</sup> day of MAY, 19 65, I found the described corner which was evidenced by CONCRETE MONUMENT

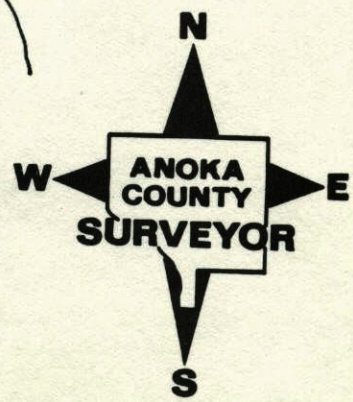
and I further certify that to perpetuate the location of said corner, I did, at the exact location thereof, place a permanent marker consisting of SAME (TOP BROKEN) SIGN AND POST  
ON NORTH SIDE

which reference or witness monuments are located in the manner following:



N.A.D.	1983	Co-ordinates
County	Project	Co-ordinates
Northing		<u>177270.4909</u>
Easting		<u>532027.6748</u>
State Plane Co-ordinates		
Y		_____
X		_____
Date _____		

Revised date	Revised date	Revised date
<u>6-22-71</u>		
<u>1-22-74</u>		
<u>3-17-94</u>		
<u>3-5-02</u>		



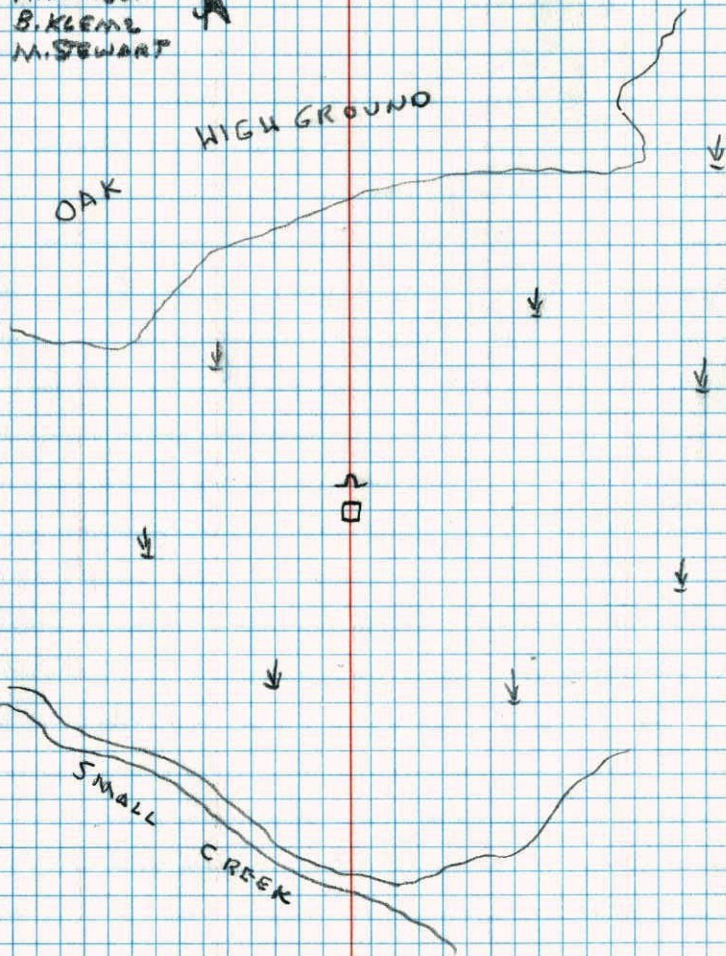


EAST 1/4 CORNER SECTION 24 T32 R23

FOUND AND RETIED BROKEN CONCRETE  
MONUMENT SIGN + POST ON NORTH  
SIDE

3-17-94

H. LARSON  
B. KLEML  
M. STEWART

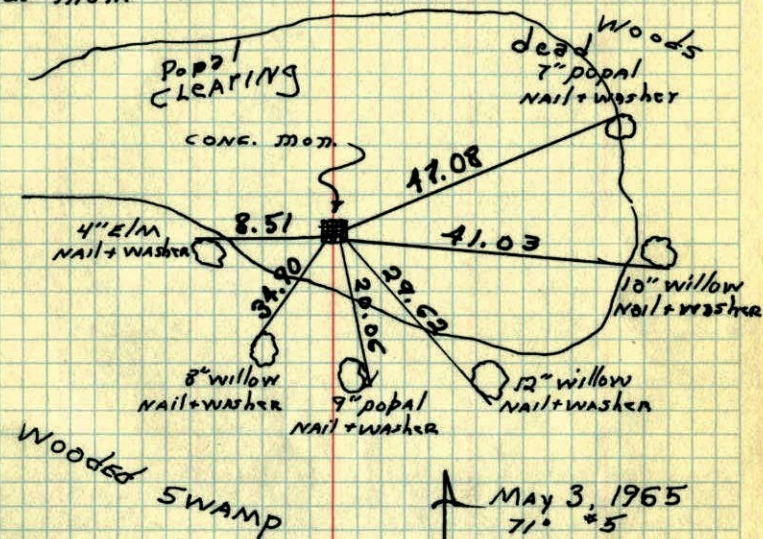


NO. 448

W. TELETYPE

E 1/4 Cor. Sec. 24, T32, R23

Found Concrete Monument up 1.5'  
Top Broken off but resting on base  
of mon.



Ground was wet  
all around corner.

June 22, 1971

R. Brien

May 3, 1965  
71° 45'  
J. OLIVER  
M.D. ANDERSON  
H. LARSON

checked  
1-22-74  
H. Larson

TEMPERATURE CORRECTED  
AND HORIZONTALLY  
TAPED MEASUREMENTS

ROLAND W. ANDERSON  
COUNTY SURVEYOR  
ANOKA COUNTY, MINNESOTA



E 1/4 Cor. Sec. 24, T32, R23

Found Concrete Monument up 1.5'

Top Broken off but resting on base  
of moni.

Nails and  
Washers  
in all Trees

N May 3, 1945

710 #5

J. Oliver  
M. D. Anderson  
H. Larson

